

As the inventor of the world famous **TensabARRIER**<sup>®</sup>, Tensator has set the market standard, so why accept less?

TensabARRIER<sup>®</sup> is one of the safest barriers on the market, unlike competitor products we have a patented braking system that slows the retraction of the webbing, eliminating the risk of an accident within your queue.

- ➔ A TensabARRIER<sup>®</sup> queue management system makes you money by optimising space
- ➔ Saves money by increasing operational efficiencies
- ➔ A full range of accessories allows the opportunity to add a revenue stream easily and quickly into your queue
- ➔ A wide range of standard and customisable products

**TensabARRIER**<sup>®</sup>

## 889 Advance

Clean & sleek; this contemporary design has become a classic.

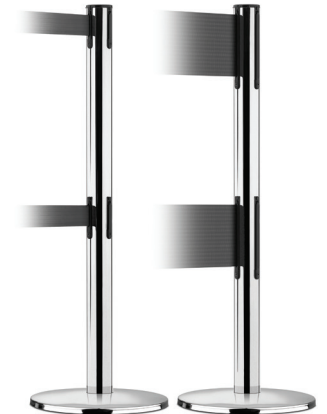
- 50mm width webbing available in 2.3m and 3.65m options
- 150mm width webbing available in 2.0m
- The 150mm wide webbing improves visibility of the barrier by three times that of the standard 50mm webbing
- Wide webbing is also a highly effective, low-cost method of communicating messages to your customers & employees
- Post available in a range of colours & finishes
- Accommodates a full range of sign holders



## 889T2 Advance Dual Line

Incorporates a second retractable belt to provide maximum control for added security & safety. The second line of webbing helps to keep control of a queue by preventing people from 'ducking' under the webbing.

- 50mm width webbing available in 2.3m and 3.65m options
- 150mm width webbing available in 2.0m



## 887 Utility

The 887 Utility Post is a great value, practical post, specifically designed for use in industrial applications within the health and safety sector. The high visibility, mild steel, retractable webbing post is designed to improve visual safety within warehouses, logistics centres and factories.

- Mild steel post available in yellow or red powder coat finish
- Supplied with a hardwearing black plastic anti-scuff base as standard
- Also available with a socket mounted fixing
- 2.3m and 3.65m webbing options
- Choice of attention grabbing double sided chevron and safety message webbing
- Modular cassette design offering four point 4-way connectivity
- Accommodates the full range of sign holders



## 888 Safety

The 888 Safety Post is a high visibility metal health and safety post, with a contrasting mild steel tube and post head, specifically designed for use in industrial applications within the health and safety sector. The mild steel, retractable webbing post is designed to improve visual safety within warehouses, logistics centres and factories.

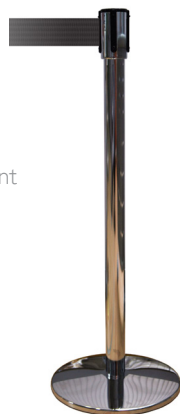
- Mild steel post available in yellow or red powder coat finish
- Black post head
- Hardwearing black plastic anti-scuff base as standard
- 2.3m and 3.65m webbing options
- Choice of attention grabbing double sided chevron and safety message webbing
- Modular cassette design offering four point 4-way connectivity
- Accommodates the full range of sign holders



## 890 Slimline

This post has a very contemporary look. It can add a little style to an otherwise standard queue. The 890 Slimline is the original slim design 51mm diameter post version of the Tensabarrier®.

- Post available in Satin Black finish with cast iron base covered by a highly durable NoScuff™ ABS black plastic cover as standard
- Selection of brass and chrome posts available with Tensator's Universal Base, with a pressed steel cover
- Post and bases can be manufactured to match any RAL colour to complement your environment
- Modular cassette design offering four-point anti-tamper connection
- Constant torque webbing retraction
- Three tape ends for user specified applications- Anti-tamper; Panic Break; Magnetic
- 2.3m and 3.65m webbing options
- Accommodates the full range of sign holders



## RB1 RollabARRIER®

The patented RollabARRIER® system is both portable & stable. Featuring two wheels which allows quick & easy movement of the posts.

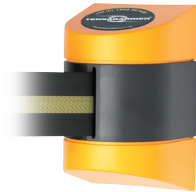
- posts can be stacked together for easy deployment & compact storage
- Takes up to 50% less storage than a standard post
- Wheels enable easy movement of the posts
- 2.3m and 3.65m webbing options



## Wall Mounted Barriers

Tensabarrier® Wall Units are perfect for situations where you want a flexible retractable barrier without taking up any floor space.

- Available in a range of colours & finishes
- 50mm width webbing available from 2.3m up to 9.0m
- 150mm width webbing available in 2.0m
- A range of mounting options ensures the best solution for you (surface mount, removable, rack mounting, magnetic mount, recess mount, clamp or glass mount)



## 885 Outdoor

The 885 Outdoor post is of rugged construction, which can be filled with either sand or water for added stability.

- Super light when empty for easy transportation
- 3.65m of retractable webbing
- Plastic post available in 5 colours (Red, Yellow, White, Black)



## TC114 Topper

Create a more effective barrier than cones alone. Designed to fit over most standard cones, the Topper is a quick and effective way to restrict access.

- Contains 3.65m of high visibility chevron webbing
- Robust, hard wearing construction
- Instant, temporary cone barrier



## 886 Heavy Duty

Perfect for indoor or outdoor use, the 886 Heavy Duty post features a UPVC moulded base & plastic post.

- The bases feature easy to carry handles & are stackable for easy storage
- Available with screw or bayonet fixings
- Available in a range of colours
- Single or dual line versions
- 50mm width webbing available in 2.3m and 3.65m options
- 150mm width webbing available in 2.0m



## TCL Tensaclear

The Tensaclear offers an opportunity to enhance your brand or promote a product.

- The clear plastic tube can be filled with products including confectionery, lotto balls & coffee beans
- Opportunity to showcase new products or messages as often as you wish
- Can accommodate an easy to change printed graphic sleeve for promotional messages
- 2.3m and 3.65m webbing options



## 875 Popular

The 875 Popular post is a functional, cost effective post. This practical post is ideal for areas with high traffic levels.

- UPVC plastic post available in 5 different colours (Red, Yellow, White, Black)
- Hard wearing cast iron base
- 2.3m of retractable webbing



# How to order

## 1. Select post design

Available in steel or plastic; with standard (50mm) or wide (150mm) width webbing. As a single or dual line webbing post.



## 2. Select base options

A range of base options are available, so that you can choose the most suitable for your environment.



Universal



Basic



Fixed or Removable

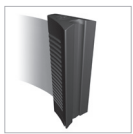
## 3. Select colour & finish

Tensator offers a wide pallet of colours & finishes, ensuring just the right look for any application & décor. From powder coated paints that match any interior to the warm & luxurious solid brass through to the cool crisp look of stainless steel. We are also able to manufacture to any RAL colour on request. Whatever your requirements, Tensator has a finish for you.



## 4. Select tape ends

A variety of connectors that attach to the end of your webbing to suit your environment and requirements.



Standard (STE)



Panic Break (PBTE)



Wire clip (WCT)



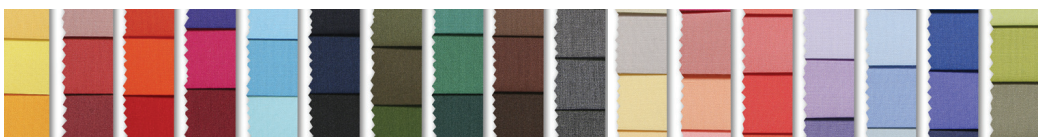
Magnetic (MTE)



One Way Loop (OWLTE)

## 5. Select webbing colour

Durable and hardwearing dye print that does not scratch or deteriorate. Choose from plain colours, standard messages or customised webbing designs.



## 6. Choose accessories

Accessories fit onto any existing Tensabarrier® to display important information:

- Sign holders available in A4 or A3 portrait and landscape orientation
- Available in a range of colours & finishes
- The Tensator Merchandising Bowl is a simple addition to any queue, and is proven to increase impulse purchase sales by up to 400% and margins by up to 30%



Post Top Signage



Merchandising Bowl

